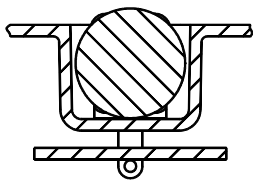
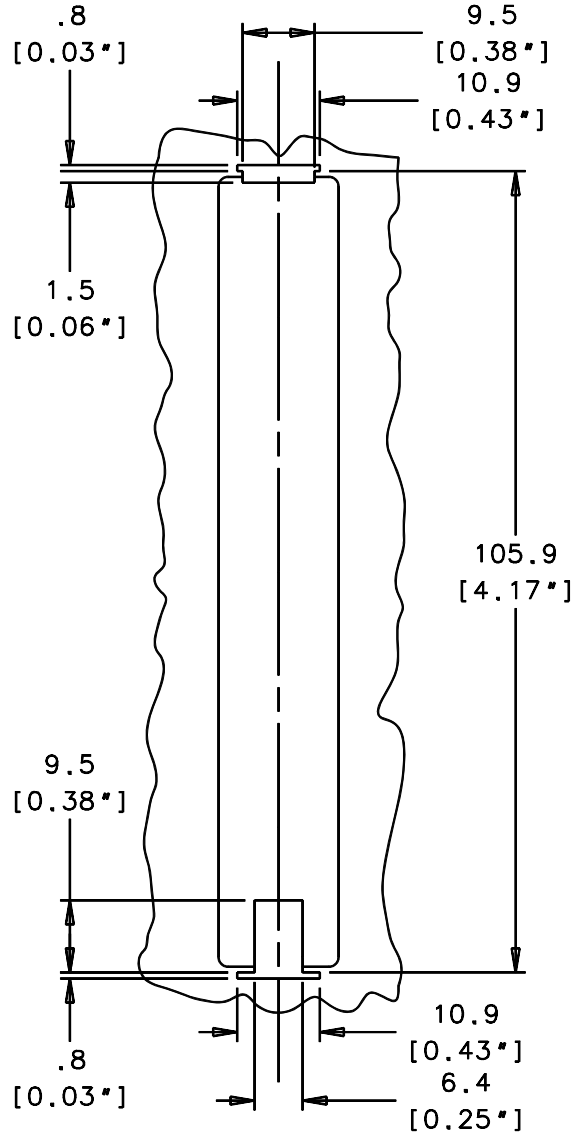
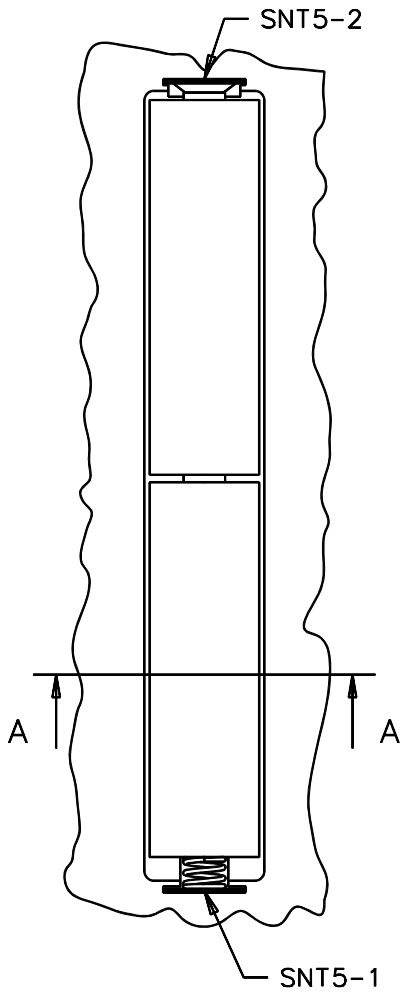


DATE 04-05-01

BATTERY COMPARTMENT SPECIFICATION

P/N 1015-02

TYPICAL BATTERY HOUSING



106.7 [4.20"]

HOLE PATTERN

APPROVALS	DATE
DRAWN CBK	04-05-01
DO NOT SCALE DRAWING ALL DIMENSIONS IN MM [IN]	



MEMORY PROTECTION DEVICES

TITLE TWO-CELL IN-LINE HOLDER FOR SNT5 AA CONTACTS