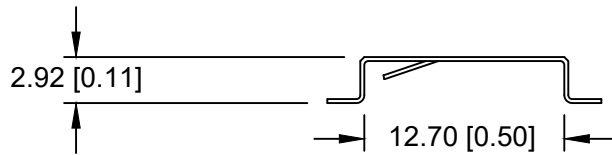
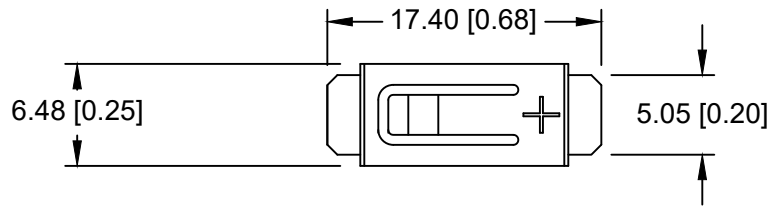
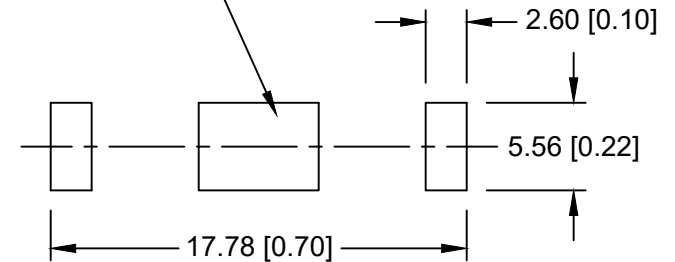


Date	SYM	REVISION RECORD	AUTH	DR.	CK.
12/16/16	C	ADDED BATTERY TABLE	T.B.	B.S.	
01/06/17	D	REMOVED DIM. 1.12 UPDATED SPECIFICATIONS	T.B.	B.S.	
03/26/19	E	UPDATED TO "ROHS COMPLIANT"	T.B.	B.S.	



NEGATIVE CONTACT PAD
NICKEL OR GOLD PLATED
RECOMMENDED



PCB LAYOUT


Estimated Weight: 0.3 g

NOTES:

- * Material- 0.25mm Phosphor Bronze, Nickel plated.
- * Vibration test: 10-50-10 hz swept in 60 seconds
x,y,z direction: 1 hour each direction
- * Result: no dislodgement of the cell or damage
no discontinuity over 10 micro-seconds
- * Shock test: half sine wave acceleration 150g.
6 ms 1 shock pulses each direction per axis
- * Result: no evidence of physical damage
- * Drop Test: Mounted on board and dropped 1 time per direction
from 1m high to wooden floor
- * Result: No dislodgement of the cell, No damage to the holders
- * Approximate weight: 0.48g

* ROHS COMPLIANT

CELL SIZE	RETAINS BATTERY NUMBERS
12.5mm	BR1220, BR1225, CR1220, CR1225

Tolerance (Except as noted)	 Memory Protection Devices, Inc 200 Broad Hollow Road, Farmingdale, New York 11735		
	decimal ±.5 (.020)	Scale	Drawn By B.S. Approved By T.B.
Fractional ± .8 (.030)	Title CR1225 BATTERY STRAP, SMT		
Angular ± 3°	Date 03/26/19	Drawing Number BC-2009	