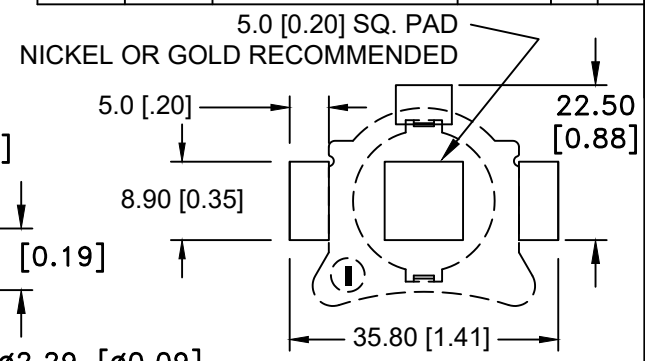
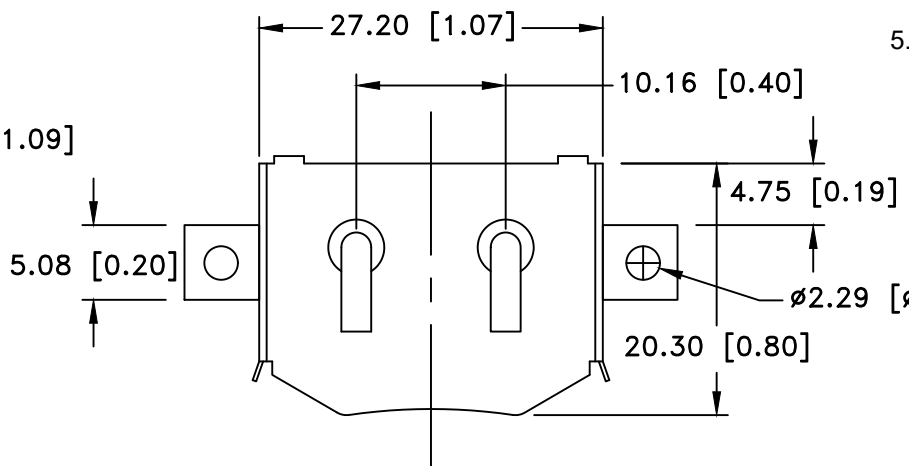
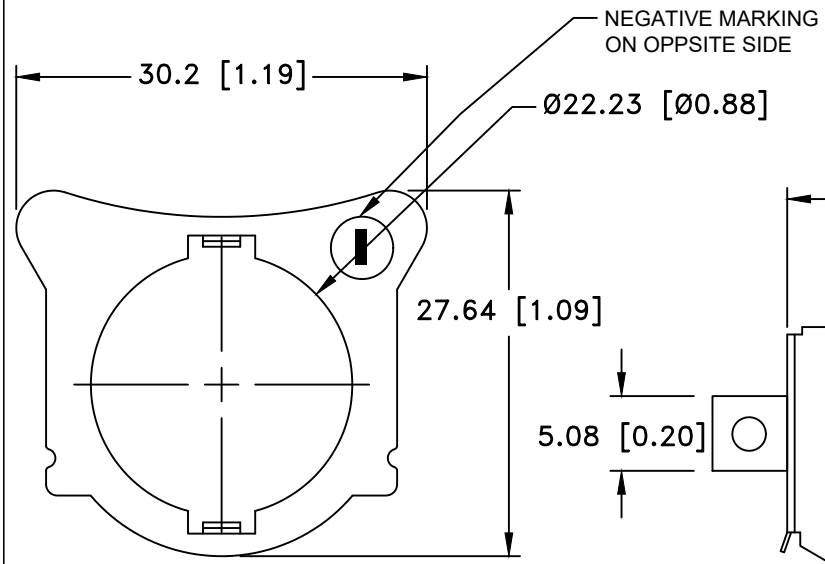
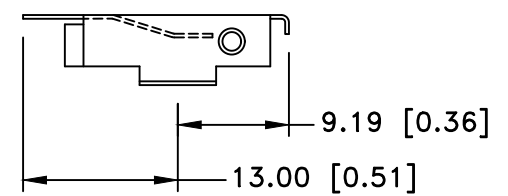
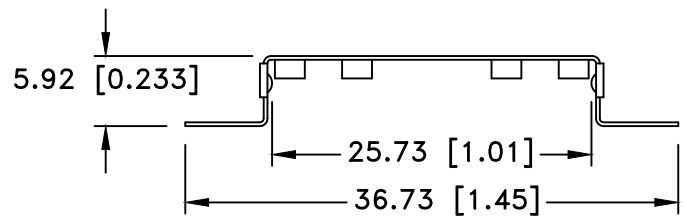
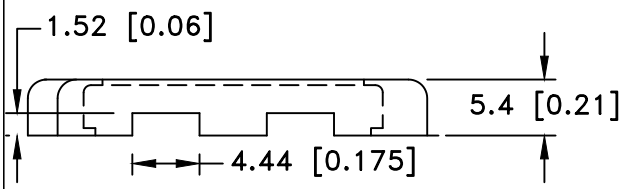


| Date | SYM | REVISION RECORD | AUTH | DR. | CK. |
|----------|-----|--------------------------|------|------|-----|
| 12/04/19 | H | ADDED WEIGHT OF THE PART | T.B. | B.S. | |
| 10/31/24 | J | UPDATED PCB LAYOUT | D.L. | B.S. | |
| | | | | | |




PCB LAYOUT

INSULATOR



SPECIFICATIONS:

- * Holder material- Polypropylene, AV161 PP, Off White
- * UL Flammability Rating: UL 94-HB File No. E108370
- * Contacts : Phosphor Bronze C5191, Nickel Plated 80-150u thickness
- * Vibration test: 10-50-10 hz swept in 60 seconds
x,y,z direction: 1 hour each direction
- * Result: no dislodgement of the cell or damage
no discontinuity over 10 milliseconds
- * Shock test: half sine wave acceleration 150g.
6 milliseconds 3 shock pulses each direction per axis,
total of 18 pulses
- * Result: no evidence of physical damage
- * Approximate weight: Retainer: 1.55g, Insulator: 0.50g
- * ROHS COMPLIANT

| | | | |
|--------------------------------|---|--------------------------------|-----------------------------------|
| Tolerance (Except as noted) |  Memory Protection Devices, Inc 200 Broad Hollow Road, Farmingdale, New York 11735 | | |
| | decimal ±.5 (.020) | Scale | Drawn By B.S. Approved By D.L. |
| Fractional ± .8 (.030) | Title CR2450 SURFACE MOUNT BATTERY RETAINER WITH INSULATOR | | |
| Angular ± 3° | Date 10/31/24 | Drawing Number BHX1-2450-SM | |