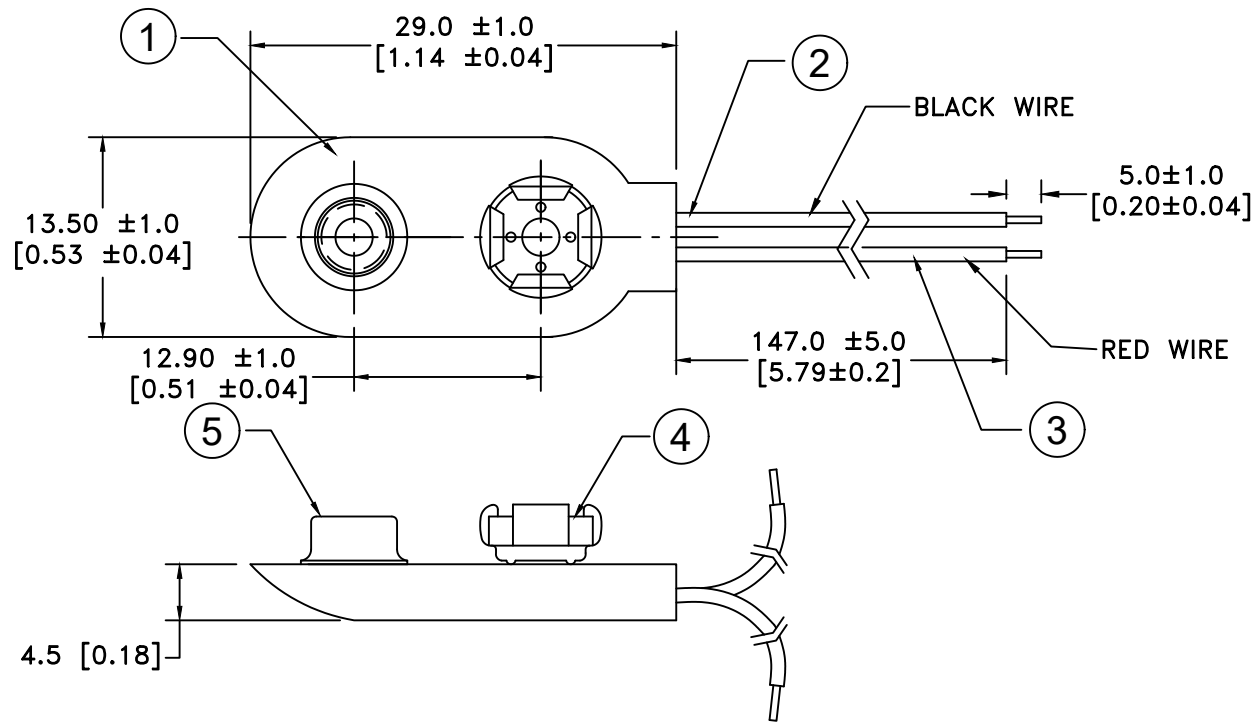


Date	SYM	REVISION RECORD	AUTH	DR.	CK.
6/07/19	D	Updated all dimensions	T.B.	B.S.	
4/21/26	E	Updated Female snap material to Phos. Bronze or Bronze	D.L.	B.S.	



NOTE:
 ORIENTATION OF SNAPS AND WIRES VARIES
 AND IS SHOWN FOR REFERENCE ONLY.
 RED WIRE TO POSITIVE CONTACT.
 BLACK WIRE TO NEGATIVE CONTACT.

ROHS COMPLIANT

NO.	PART NAME	MATERIAL	QTY.	Tolerance (Except as noted)	MPD Memory Protection Devices, Inc 200 Broad Hollow Road, Farmingdale, New York 11735		
1	COVER	PVC COVER OVER FIBERBOARD	1	decimal ±.5 (.020) Fractional ± .8 (.030) Angular ± 3°	Scale	Drawn By B.S.	
2	BLACK WIRE(-)	24 AWG, UL-1007, CSA TR-64, 300V, 80°C	1			Approved By T.B.	
3	RED WIRE (+)	24 AWG, UL-1007, CSA TR-64, 300V, 80°C	1		Title 9 VOLT BATTERY SNAP-I STYLE, HEAVY DUTY, 6" WIRE LEADS		
4	FEMALE SNAP	PHOSPHOR BRONZE OR BRONZE, NICKLE PLATED, HEAVY DUTY	1				
5	MALE SNAP	BRASS NICKLE PLATED	1				
				Date	Drawing Number		
				04/21/26	BS6I-HD		